

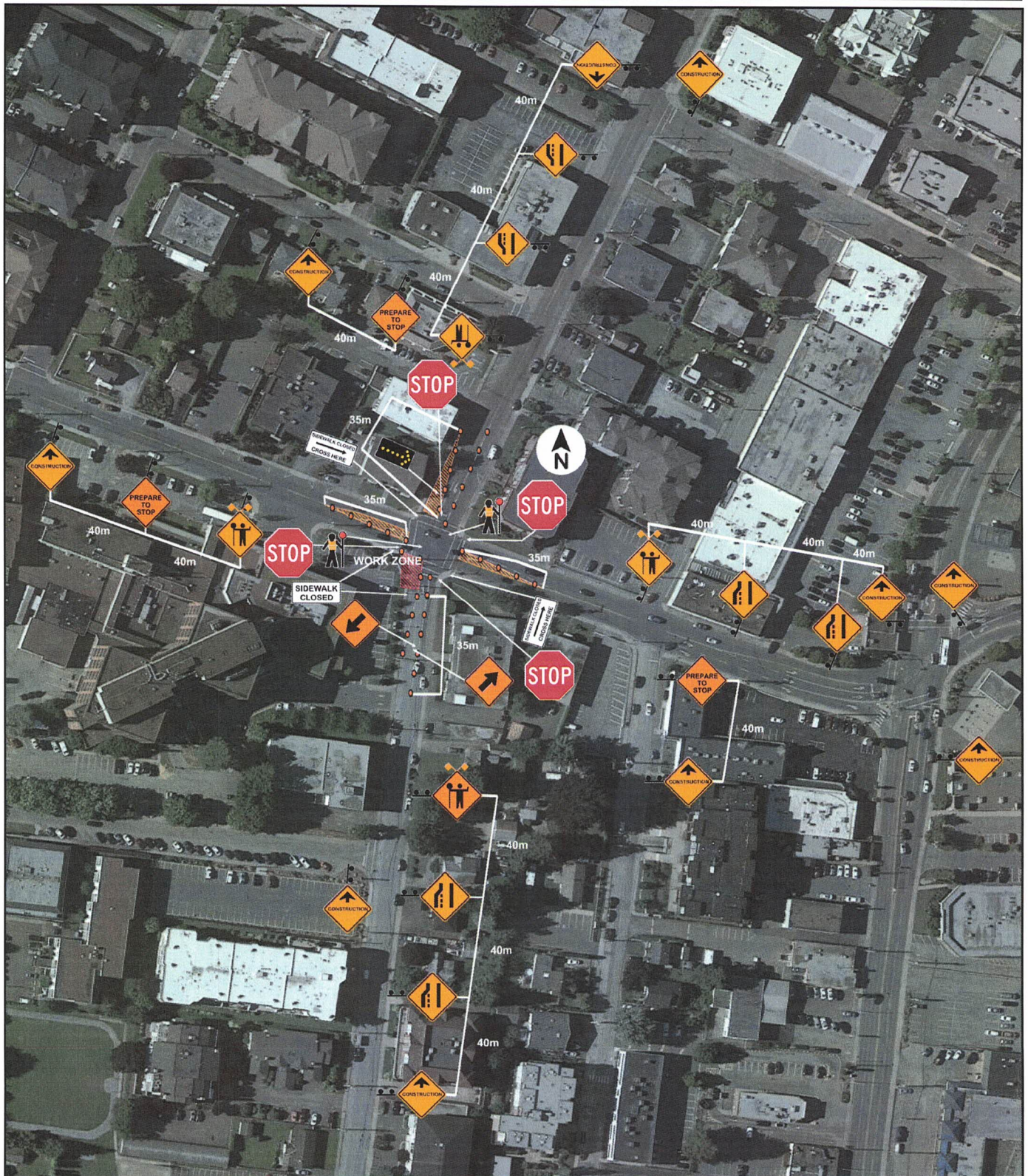
## TMP 46 - City of Chilliwack Street Lighting 2020: Hodgins Ave @ Mary St NW Corner



Traffic signals to be turned off for part of construction. 4 Stop signs will be placed at the intersection for four way stop procedure. TCPs to control traffic in the intersection and escort pedestrians safely through work zone.



# TMP 47 - City of Chilliwack Street Lighting 2020: Hodgins Ave @ Mary St SW Corner



Traffic signals to be turned off for part of construction. 4 Stop signs will be placed at the intersection for four way stop procedure. TCPs to control traffic in the intersection and escort pedestrians safely through work zone.